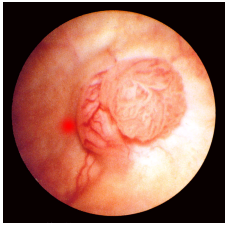




Oncology



Awaiting further information from the section.

The 2011 Annual Meeting of the Section took place on 14 - 15 November 2011 at the Royal College of Surgeons in London, on the topic of "*Kidney Cancer*".

The [2012 Annual Meeting](#) will take place between 15 and 16 November 2012 in Belfast, on the subject of "*Urothelial Cancer*".



Jun25

[BAUS 2012](#)

at the Scottish Exhibition & Conference Centre, Finnieston, Glasgow

Jun17

[BAUS 2013](#)

at Manchester Central Convention Centre, Petersfield, Manchester

May19

[American Urological Association Annual Meeting](#)

AUA Annual Meeting in Atlanta, Georgia

Jun07

[Challenges in Laparoscopy and Robotics 2012](#)

Challenges in Laparoscopy and Robotics 2012

Jun15

[BAUN Section of Oncology Spring Conference](#)

Organ-confined prostate cancer and its associated symptoms

Latest news



[Annual Meeting - Live Booking](#)

Available to members and non-members until 10:00hr on 22 June 2012 9 March 2012



[STUKA & STORM audits launched](#)

Two new audits launched by the Section of Oncology 14 June 2011



[Complex operations datasets updated](#)

Revised prostatectomy, nephrectomy & cystectomy datasets went live on 11 April 11 April 2011



[Section of Oncology Newsletter](#)

Tim O'Brien, Chairman 2 February 2011



[Section of Oncology Executive Committee](#)

Election results 22 December 2010

Latest publications



[Briefing Paper on Biomarkers](#)

Economic Evaluation of Urinary Biomarkers and Photodynamic Diagnosis



[Haematuria Guidelines](#)

Joint consensus statement on the initial assessment of haematuria. Published July 2008



[Prostate Cancer MDT](#)

MDT (Multi-disciplinary Team) Guidance for Managing Prostate Cancer. Second Edition (November 2009)

About BAUS

- [Data & Audit Project](#)
- [Contact us](#)
- [Find us](#)
- [Governance](#)

- [Our history](#)
- [Joining BAUS](#)
- [Journals](#)
- [Medals & Awards](#)
- [Publications](#)
- [Our staff](#)
- [Workforce](#)
- [Working for BAUS](#)

Updates

- [Presidents briefing](#)
- [News](#)
- [Elections](#)
- [BAUS 2012](#)

Sections

- [Academic Urology](#)
- [Andrology & Genito-Urethral Surgery](#)
- [Endourology](#)
- [Female Neurological & Urodynamic Urology](#)
- [Oncology](#)
- [Virtual Museum](#)

Regions

- [East Midlands](#)
- [Scotland East](#)
- [East of England](#)
- [Scotland West](#)
- [Irish Republic](#)
- [South Central](#)
- [London North](#)
- [South East Coast](#)
- [London South](#)
- [South West](#)
- [North East](#)
- [Wales](#)
- [North West](#)
- [West Midlands](#)
- [Northern Ireland](#)
- [Yorks & Humber](#)

Education & Training

- [Office of Education](#)
- [Career path of a Urologist](#)
- [CPD](#)
- [Revalidation](#)
- [SAC in Urology](#)
- [SURG](#)

Patients

- [Urology is ...](#)
- [Glossary](#)
- [I think I might have...](#)
- [I'm told I need ...](#)
- [Your patient journey](#)
- [Who's who in surgery](#)

Urolink

- [About](#)
- [Contact](#)
- [Link Centres](#)
- [Links](#)
- [Resources](#)
- [Visits](#)
- [Working abroad](#)
- [Working with Urolink](#)