



"I think I might have..."

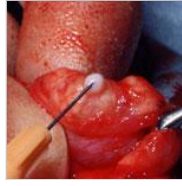
Click on the name or the image to learn about each condition



[Blood in the semen](#)



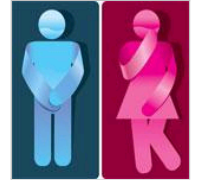
[Blood in the urine](#)



[Fertility problems](#)



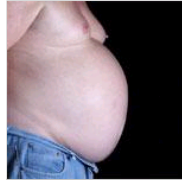
[Impotence](#)



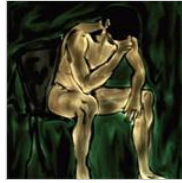
[Incontinence](#)



[Kidney stones](#)



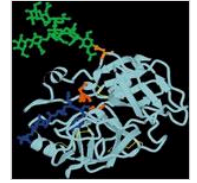
[Male menopause](#)



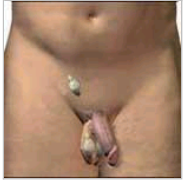
[Premature ejaculation](#)



[Prostate problems](#)



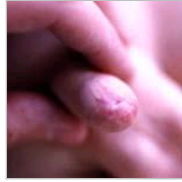
[Raised PSA](#)



[Testicle missing](#)



[Testicular lump](#)



[Tight foreskin](#)



[Urinary infection](#)

Disclaimer

Whilst every effort has been made to ensure the accuracy of the information contained in this section, no guarantee can be given that all errors and omissions have been excluded.

No responsibility for loss occasioned by any person acting, or refraining from action, as a result of the material in this section can be accepted by the British Association of Urological Surgeons Limited.

Click [here to use our feedback form](#) & send us your comments about this section of the BAUS website

About BAUS

- [Data & Audit Project](#)
- [Contact us](#)
- [Find us](#)
- [Governance](#)
- [Our history](#)
- [Joining BAUS](#)
- [Journals](#)
- [Medals & Awards](#)
- [Publications](#)
- [Our staff](#)
- [Workforce](#)
- [Working for BAUS](#)

Updates

- [Presidents briefing](#)
- [News](#)
- [Elections](#)
- [BAUS 2012](#)

Sections

- [Academic Urology](#)
- [Andrology & Genito-Urethral Surgery](#)
- [Endourology](#)
- [Female Neurological & Urodynamic Urology](#)
- [Oncology](#)

- [Virtual Museum](#)

Regions

- [East Midlands](#)
- [Scotland East](#)
- [East of England](#)
- [Scotland West](#)
- [Irish Republic](#)
- [South Central](#)
- [London North](#)
- [South East Coast](#)
- [London South](#)
- [South West](#)
- [North East](#)
- [Wales](#)
- [North West](#)
- [West Midlands](#)
- [Northern Ireland](#)
- [Yorks & Humber](#)

Education & Training

- [Office of Education](#)
- [Career path of a Urologist](#)
- [CPD](#)
- [Revalidation](#)
- [SAC in Urology](#)
- [SURG](#)

Patients

- [Urology is ...](#)
- [Glossary](#)
- [I think I might have...](#)
- [I'm told I need ...](#)
- [Your patient journey](#)
- [Who's who in surgery](#)

Urolink

- [About](#)
- [Contact](#)
- [Link Centres](#)
- [Links](#)
- [Resources](#)
- [Visits](#)
- [Working abroad](#)
- [Working with Urolink](#)