



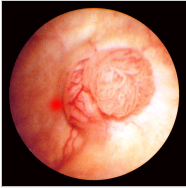
Urology is ...

... one of the most varied branches of surgery, encompassing diseases of kidneys, bladder and prostate to include incontinence, impotence, infertility, cancer and reconstruction of the genito-urinary tract. It encompasses patients of both sexes and all ages, from newborn infants to elderly pensioners.

Over the last 20 years, urology has become one of the most innovative surgical specialties. Urologists use traditional surgical methods but have also pioneered the most modern high-tech, fibreoptic and endoscopic techniques (sometimes called *minimally-invasive surgery*). We were one of the first specialties to use "keyhole" surgery and we still retain the most comprehensive array of minimally-invasive techniques for patients.

GP referrals for urological problems have increased by 20% over the last 20 years. However, the number of patients who need to undergo urological surgery for their condition has fallen to 10-12% (between 1 in 8 and 1 in 10). If you are referred to a urologist, therefore, it is not inevitable that you will need an operation.

Click on the names, use the text links to the left or click on the thumbnails to view further information.



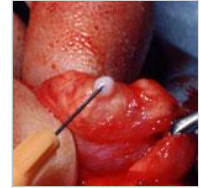
[Cancer](#)



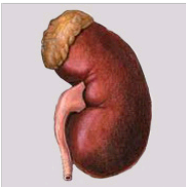
[Impotence](#)



[Incontinence](#)



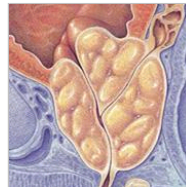
[Infertility](#)



[Kidney Disease](#)



[Paediatrics](#)



[Prostate Disease](#)



[Stones](#)

Click [here to use our feedback form](#) & send us your comments about this section of the BAUS website

About BAUS

- [Data & Audit Project](#)
- [Contact us](#)
- [Find us](#)
- [Governance](#)
- [Our history](#)
- [Joining BAUS](#)
- [Journals](#)
- [Medals & Awards](#)
- [Publications](#)
- [Our staff](#)
- [Workforce](#)
- [Working for BAUS](#)

Updates

- [Presidents briefing](#)
- [News](#)
- [Elections](#)
- [BAUS 2012](#)

Sections

- [Academic Urology](#)
- [Andrology & Genito-Urethral Surgery](#)
- [Endourology](#)
- [Female Neurological & Urodynamic Urology](#)
- [Oncology](#)
- [Virtual Museum](#)

Regions

- [East Midlands](#)
- [Scotland East](#)

- [East of England](#)
- [Scotland West](#)
- [Irish Republic](#)
- [South Central](#)
- [London North](#)
- [South East Coast](#)
- [London South](#)
- [South West](#)
- [North East](#)
- [Wales](#)
- [North West](#)
- [West Midlands](#)
- [Northern Ireland](#)
- [Yorks & Humber](#)

Education & Training

- [Office of Education](#)
- [Career path of a Urologist](#)
- [CPD](#)
- [Revalidation](#)
- [SAC in Urology](#)
- [SURG](#)

Patients

- [Urology is ...](#)
- [Glossary](#)
- [I think I might have...](#)
- [I'm told I need ...](#)
- [Your patient journey](#)
- [Who's who in surgery](#)

Urolink

- [About](#)
- [Contact](#)
- [Link Centres](#)
- [Links](#)
- [Resources](#)
- [Visits](#)
- [Working abroad](#)
- [Working with Urolink](#)