



**Emergency Surgery  
in the 21<sup>st</sup> Century**

**Who Provides Emergency  
Urological Surgery ?**

**21<sup>st</sup> March 2014**

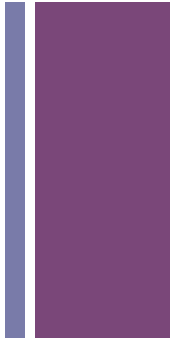
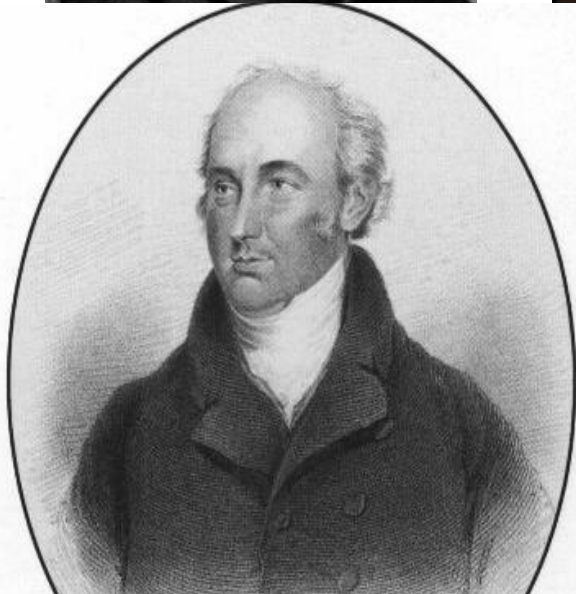
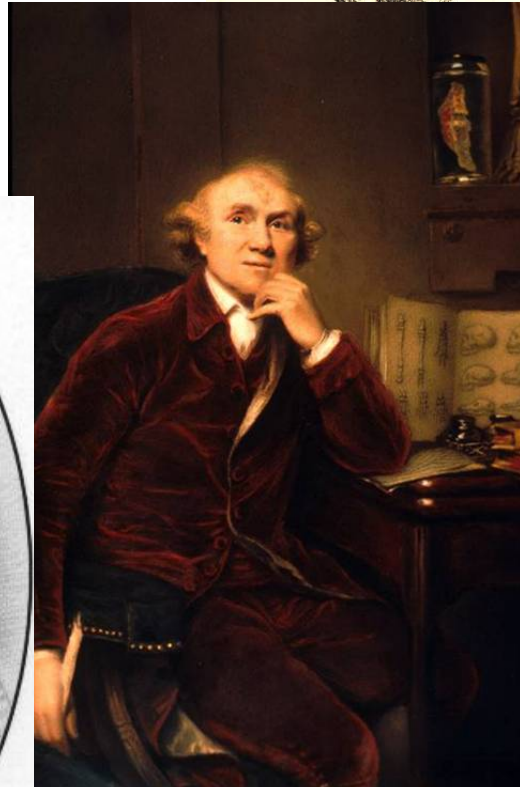
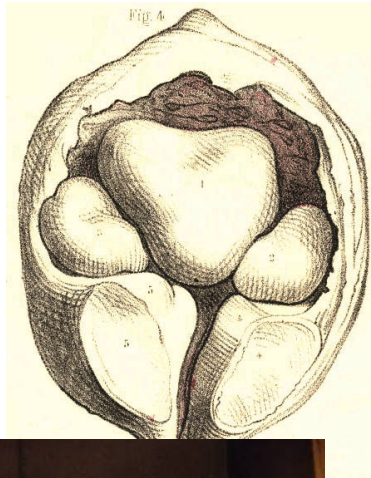
**RCS Ed**



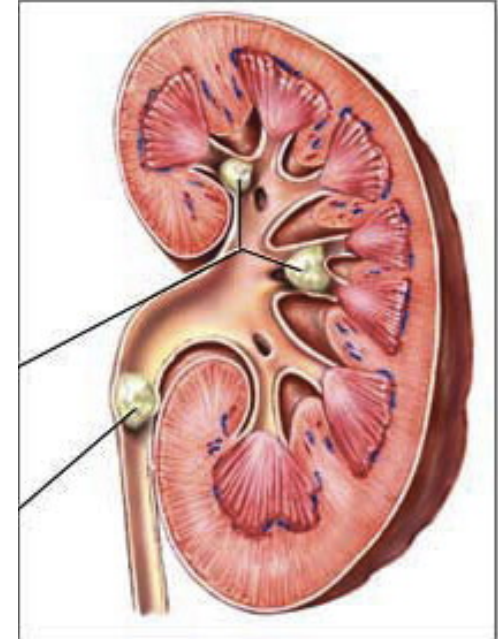
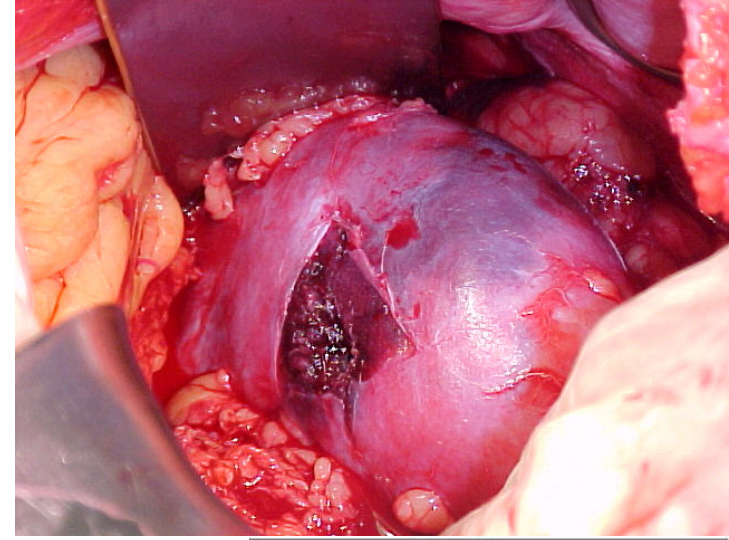
**PRESIDENT'S MEETING and Audit Symposium 2014**  
In collaboration with the Surgical Specialty Associations

Mark J Speakman MS FRCS  
Vice-President BAUS  
Consultant Urological Surgeon

# Emergency Urological Surgery



# Emergency Urological Surgery



# + Emergency Urology [approx 25% Gen Surg]

- Trauma
  - Renal
  - Ureteric
  - Bladder, urethral
  - Scrotal, Penile fracture
- Torsion
- Ureteric Colic
- UTI & Pyelonephritis
- Pyonephrosis
- Haematuria and clot retention
- Fournier's gangrene
- Urinary retention; acute and Chronic
- Epididymo-orchitis / scrotal abscess
- Paraphimosis





# Survey Monkey Questionnaire of Emergency Urological On Call

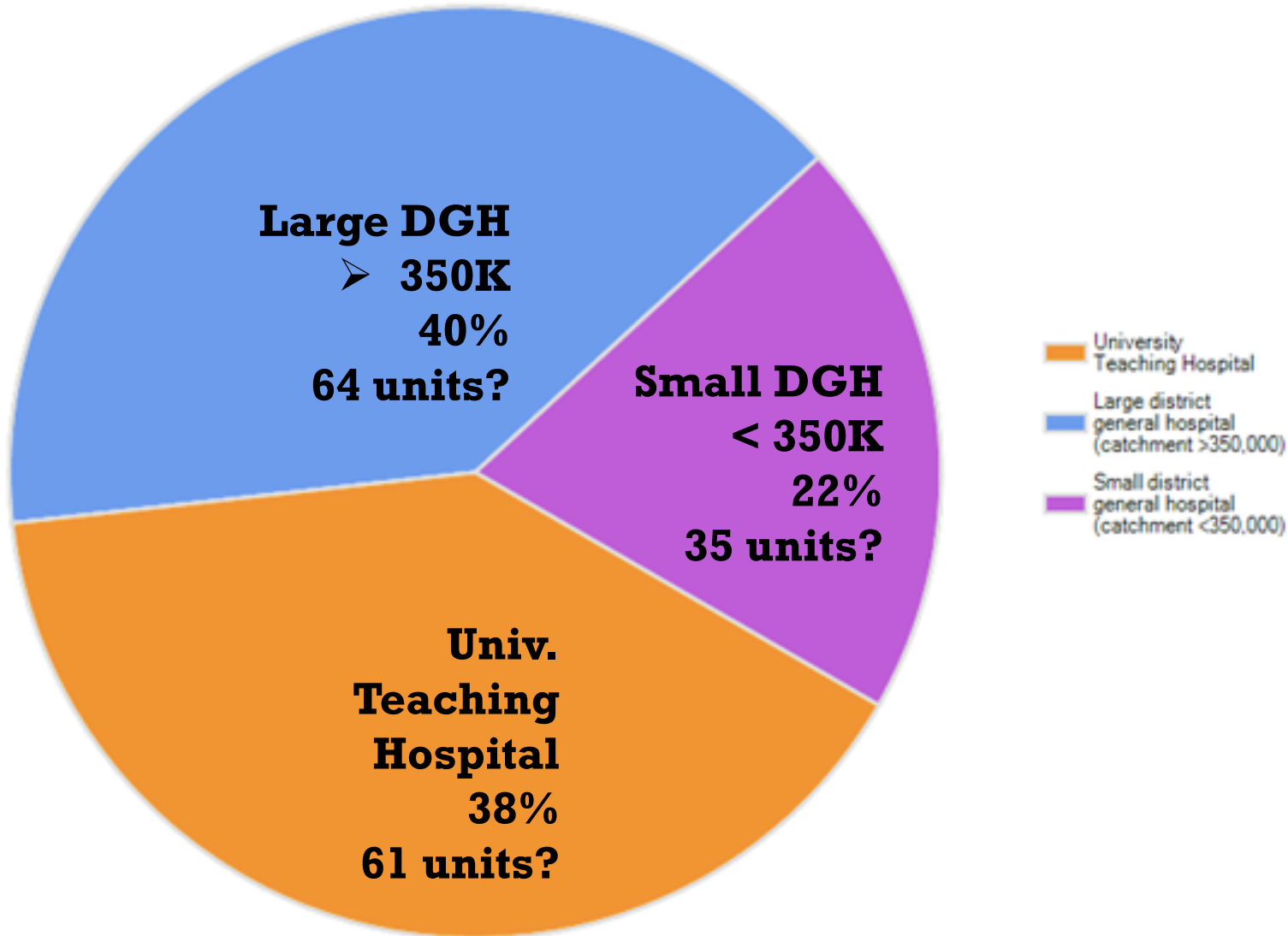


- Approx 160 urology units
- 330 consultant urology responses [343]

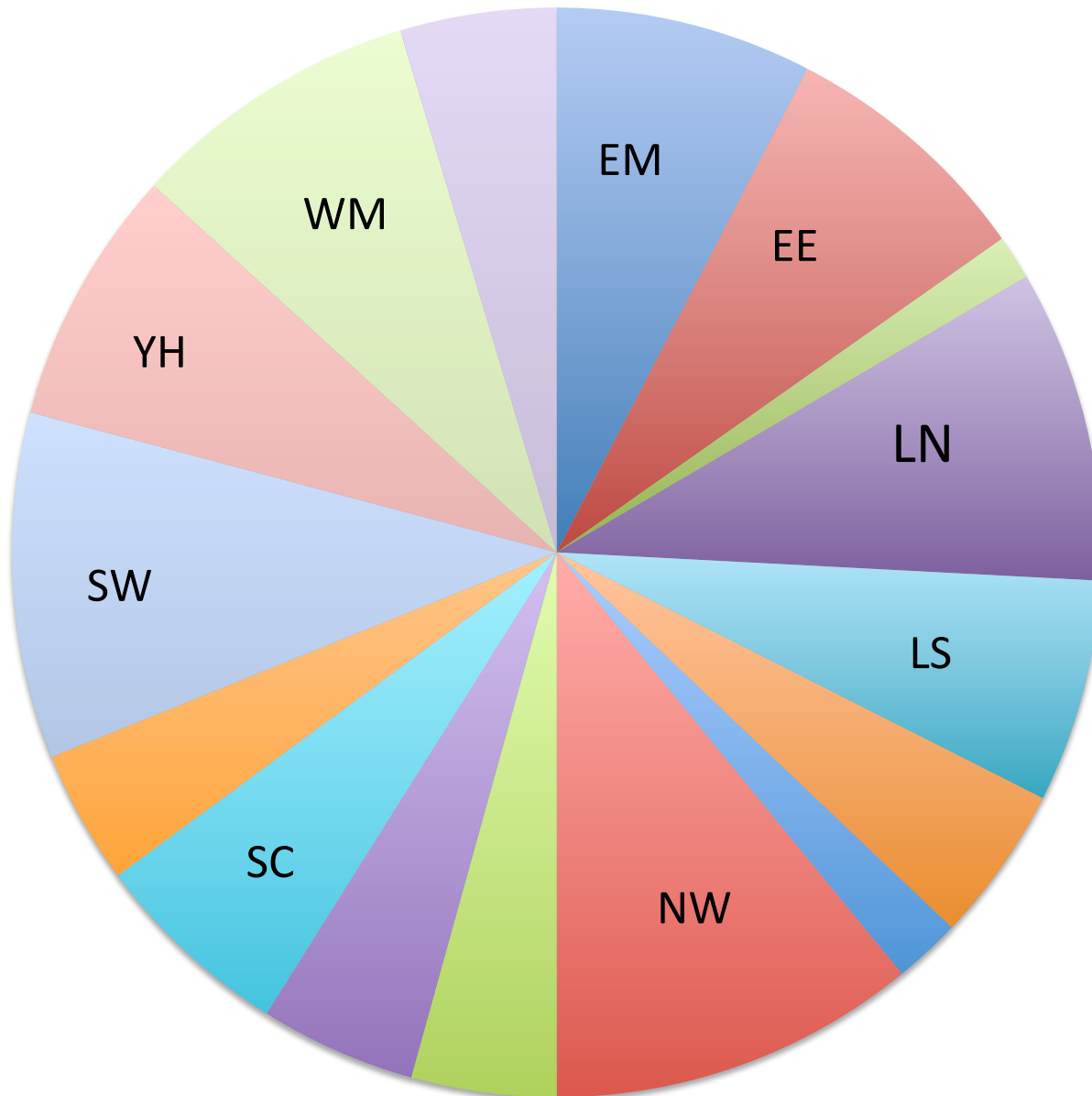


# + What type of hospital do you work in?

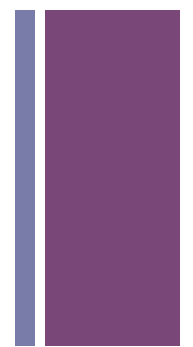
330 consultant responses



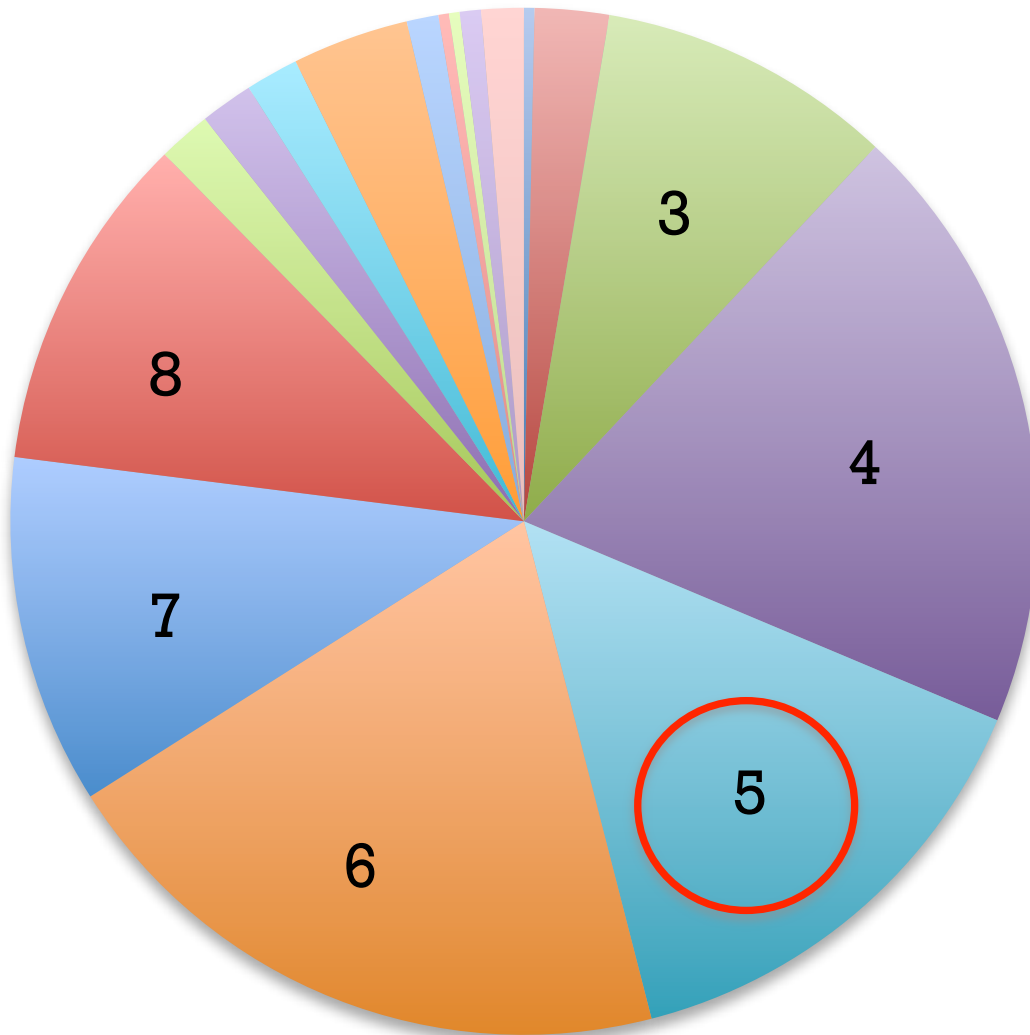
# + In which Region do you work?



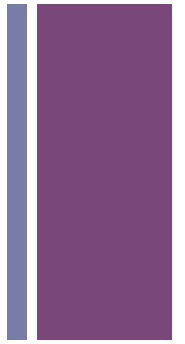
- East Midlands
- East of England
- Irish Republic
- London North
- London South
- North East
- Northern Ireland
- North West
- Scotland West
- Scotland East
- South Central
- South East Coast
- South West
- Yorkshire and The Humber
- West Midlands
- Wales



+ What is your intensity of on call in the week 1 in ...



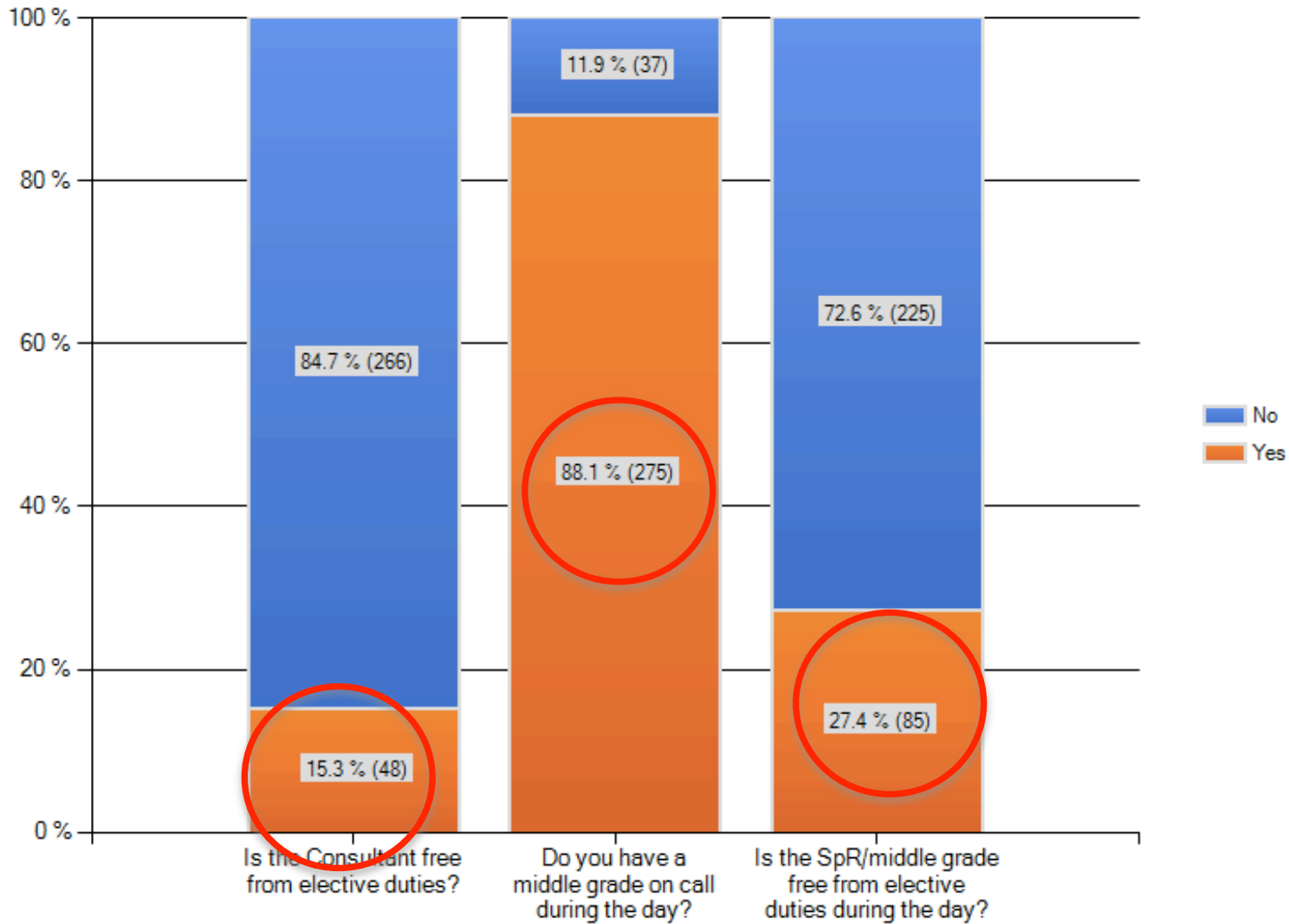
- 1
- 2
- 3
- 4
- 5
- 6
- 7
- 8
- 9



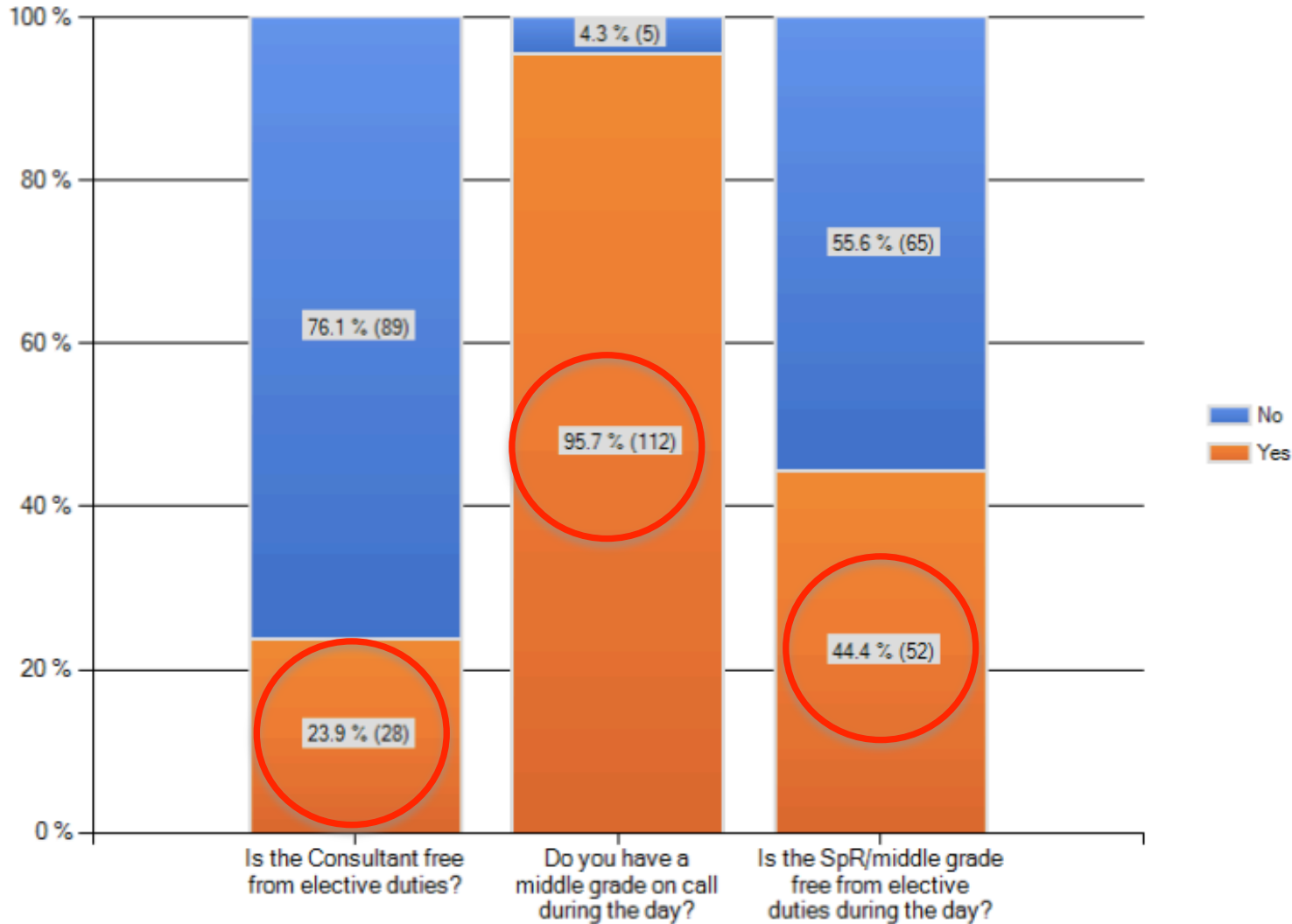


# + What urology cover is available during the day?

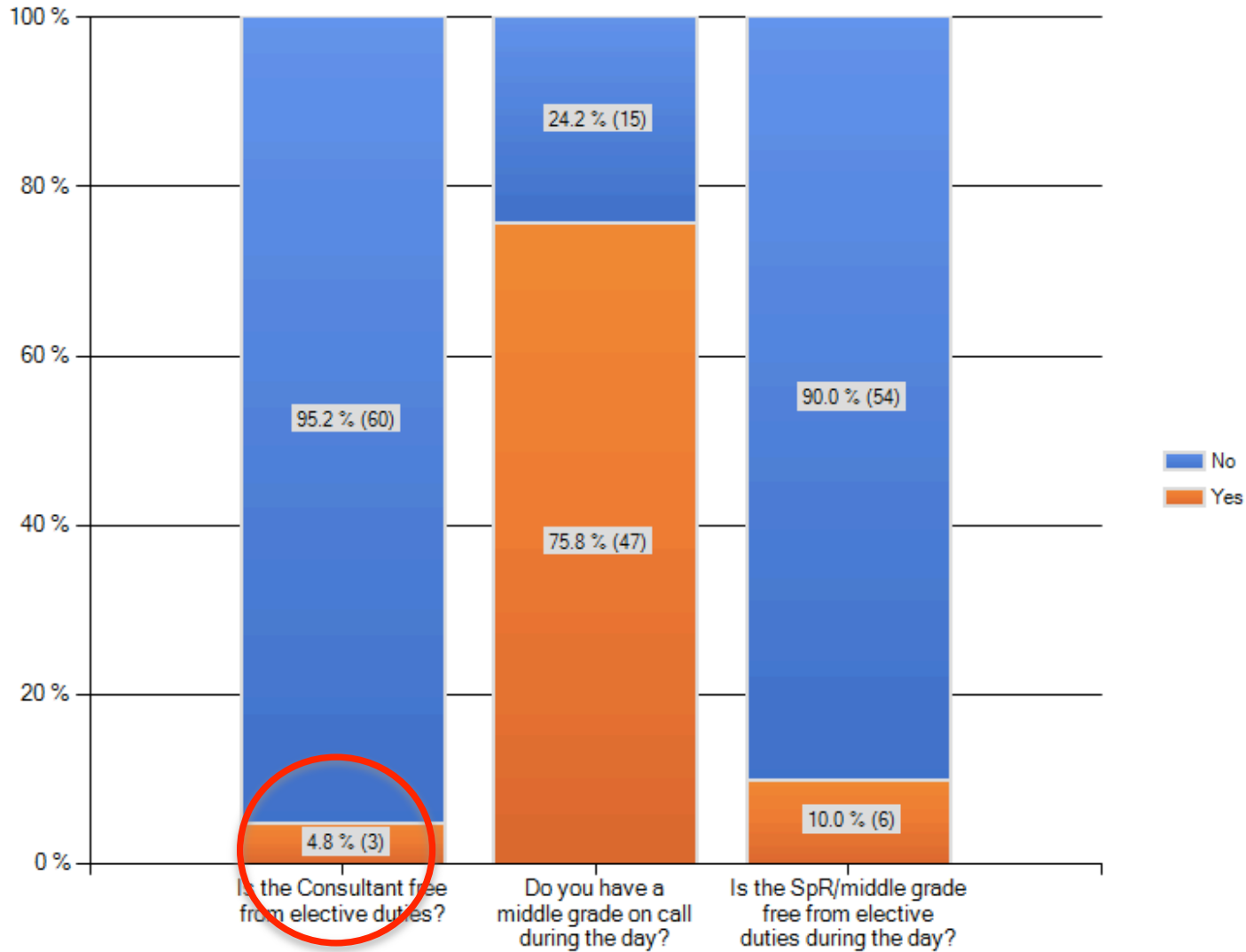
## Overall:



# + What urology cover is available during the day? Teaching Hospitals

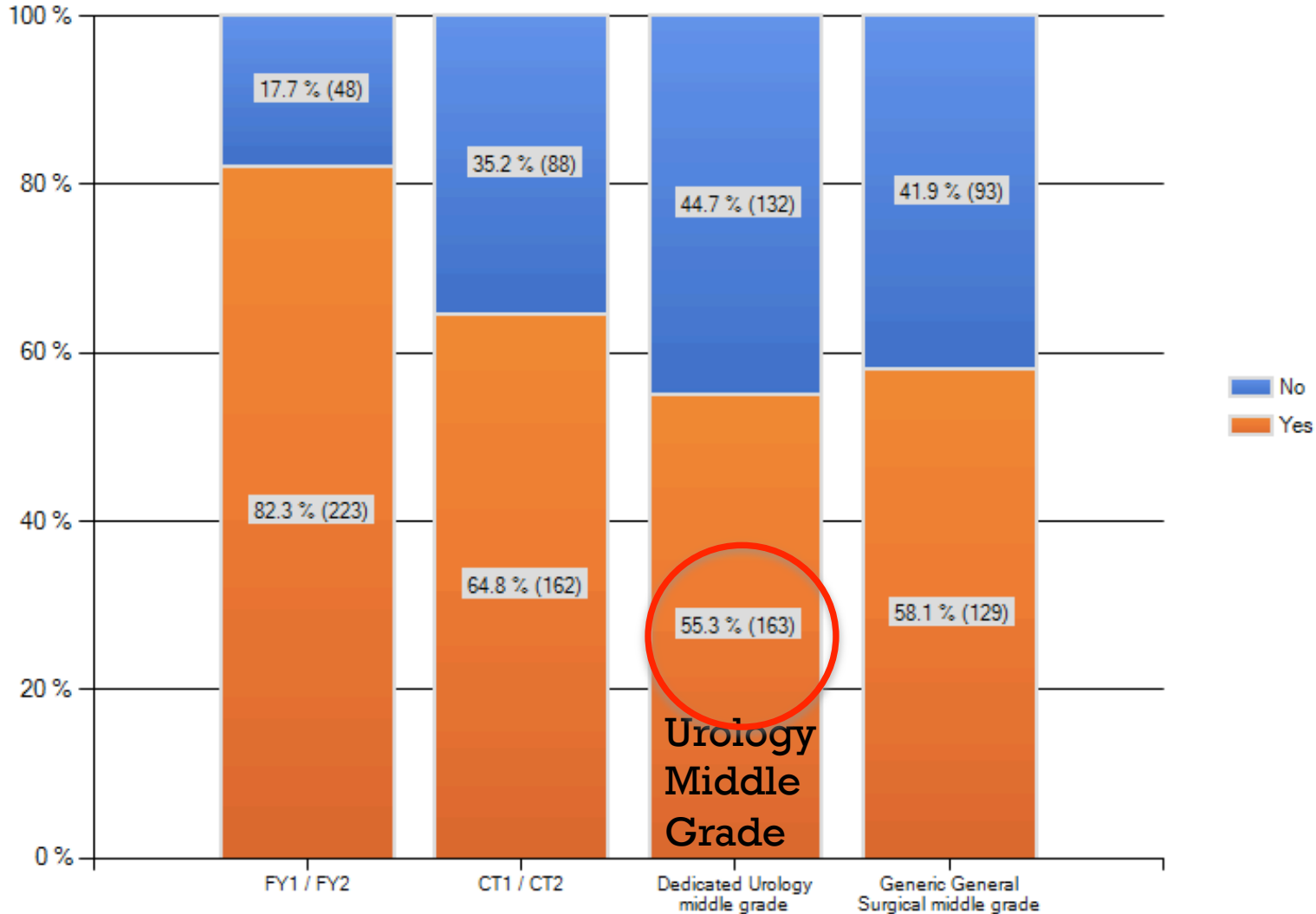


# + What urology cover is available during the day? Small DGHs < 350K

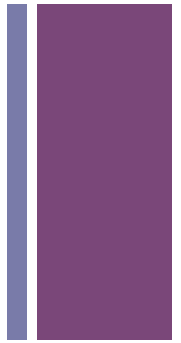
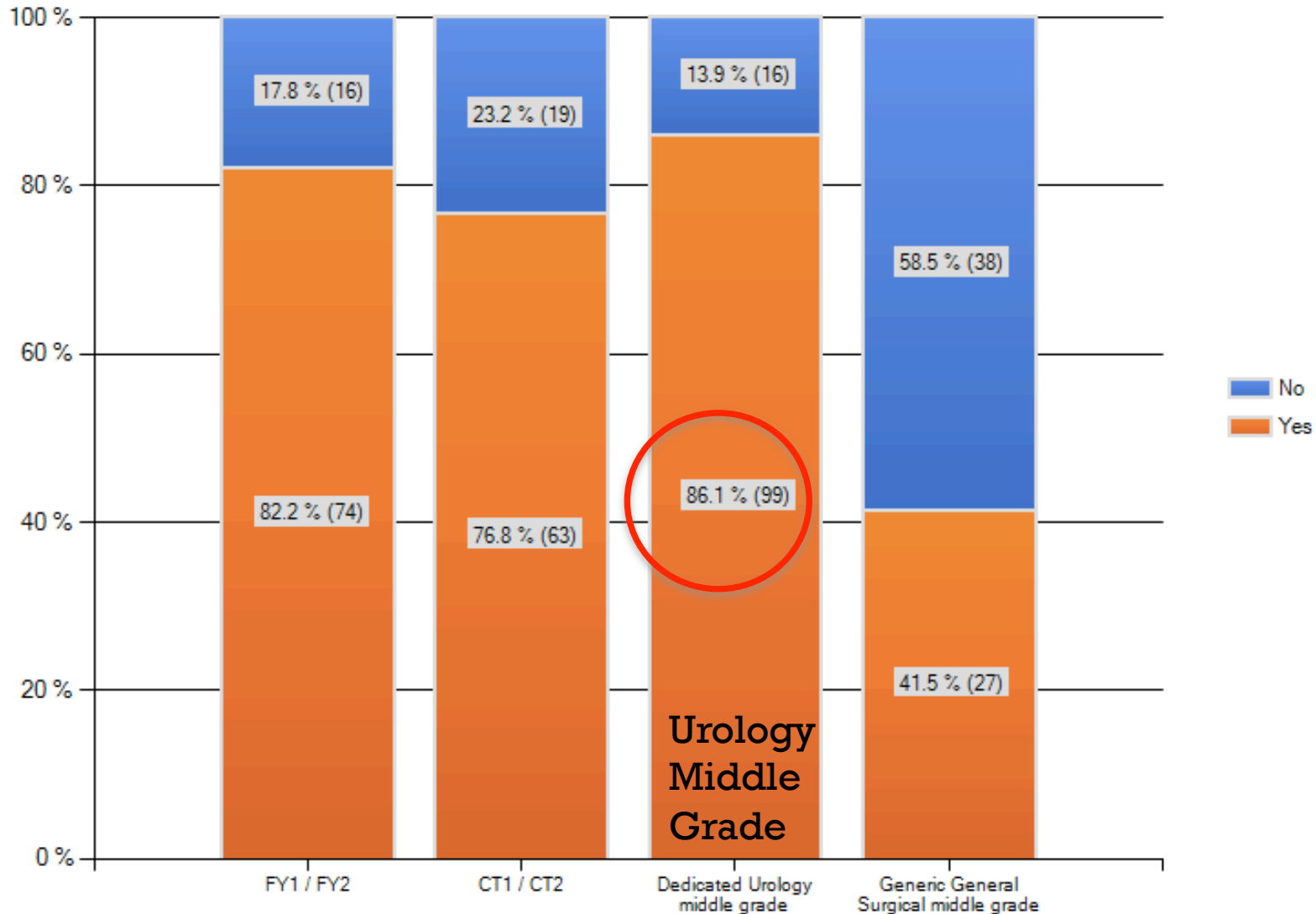


# + Junior Cover available for on call after 8pm

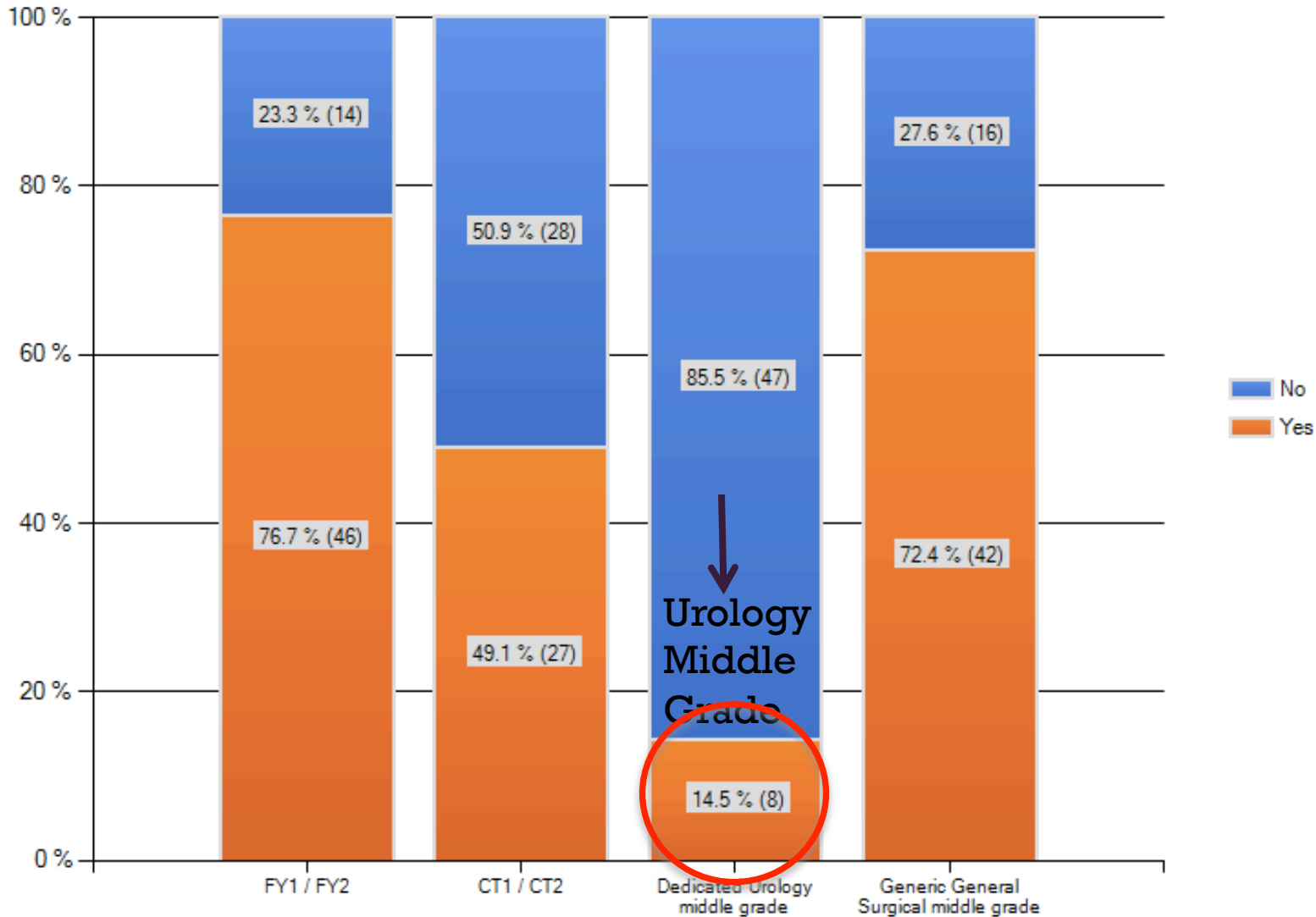
## Overall:



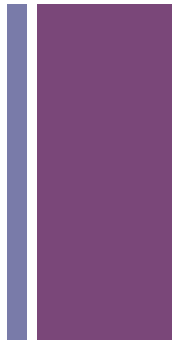
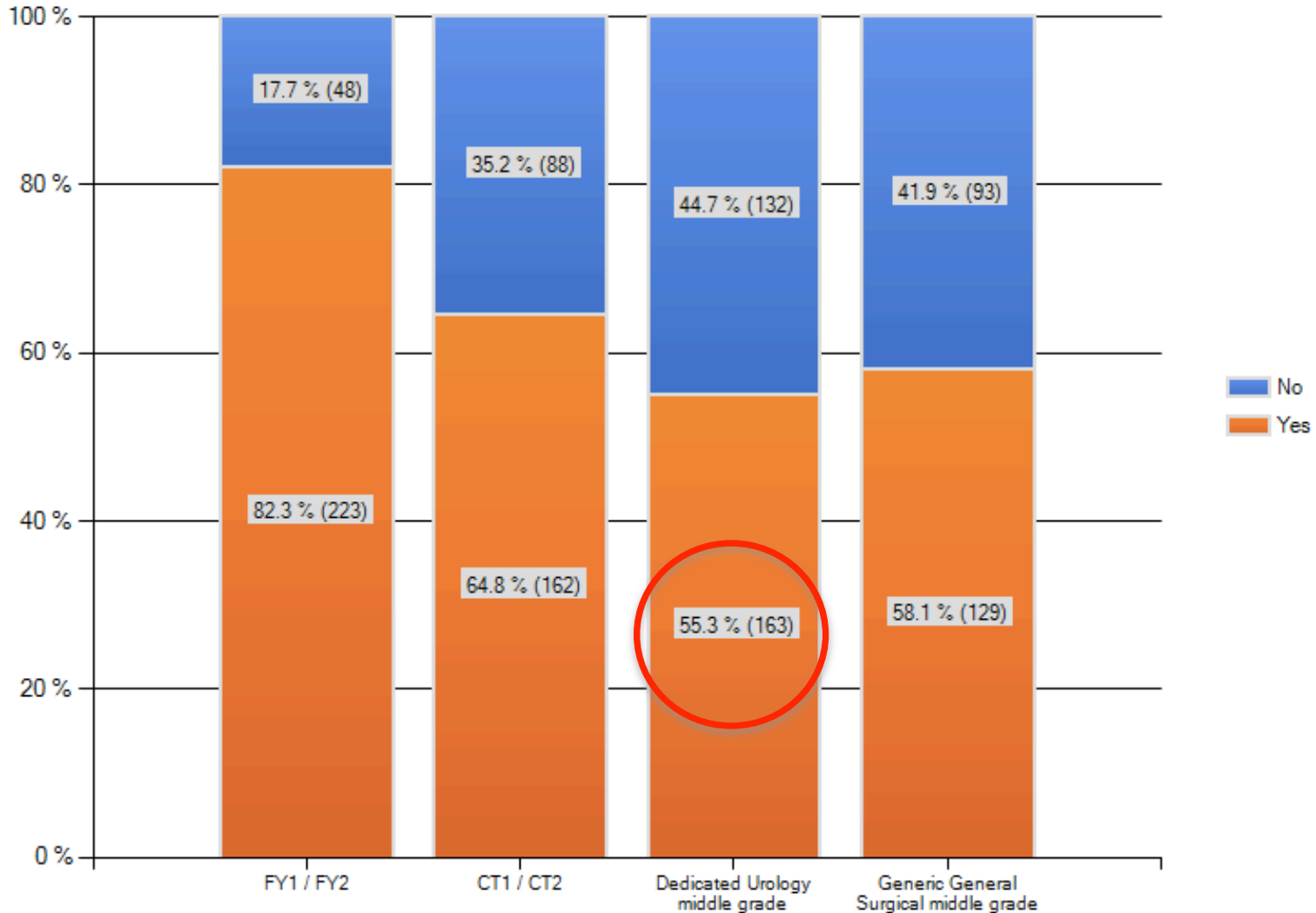
# + Junior Cover available for on call after 8pm Teaching Hospitals



# + Junior Cover available for on call after 8pm Small DGHs <350K



# + Junior Cover available for on call after 8pm Large DGHs > 350K



# + Out of Hours Activity



6. How much "Out of hours" NHS activity do you experience in a typical month?

	0	1	2	3	4	5	6	7	8	9	10	11
Approximate number of "out of hours" calls per month?	0.0% (0)	2.3% (3)	3.8% (5)	6.2% (8)	5.4% (7)	10.8% (14)	8.5% (11)	5.4% (7)	6.9% (9)	0.0% (0)	<b>21.5%</b> <b>(28)</b>	0.0% (1)
Approximate number of "recalls to hospital" per month?	3.1% (4)	17.7% (23)	<b>25.4%</b> <b>(33)</b>	13.8% (18)	12.3% (16)	10.0% (13)	4.6% (6)	2.3% (3)	5.4% (7)	0.0% (0)	2.3% (3)	0.0% (0)
Approximate number of "recalls to hospital" between midnight and 7am per month?	20.9% (27)	<b>44.2%</b> <b>(57)</b>	20.2% (26)	4.7% (6)	3.1% (4)	2.3% (3)	2.3% (3)	0.0% (0)	0.0% (0)	0.0% (0)	1.6% (2)	0.0% (0)





# + Requirements for emergency urological surgery

- Admission under a consultant urologist (< 30mins)
  - After assessment by an appropriate **SPR (Urol or Gen Surg)**
- Ideally to dedicated urology beds (critical care access)
- Availability of an emergency theatre (with radiology)
- Access to on call interventional radiology
- Full laboratory access
- All admissions should have senior assessment within 12-24 hours (24/7)
- Regular audit of all emergency admissions
- Imperative the patient is at the centre of any future service redesign and not the vested interests of individual surgeons.



# + Who provides emergency urological surgery?

- Urologists
- General Surgeons
- Paediatric surgeons
- Interventional Radiologists
- [Medical Directors]

